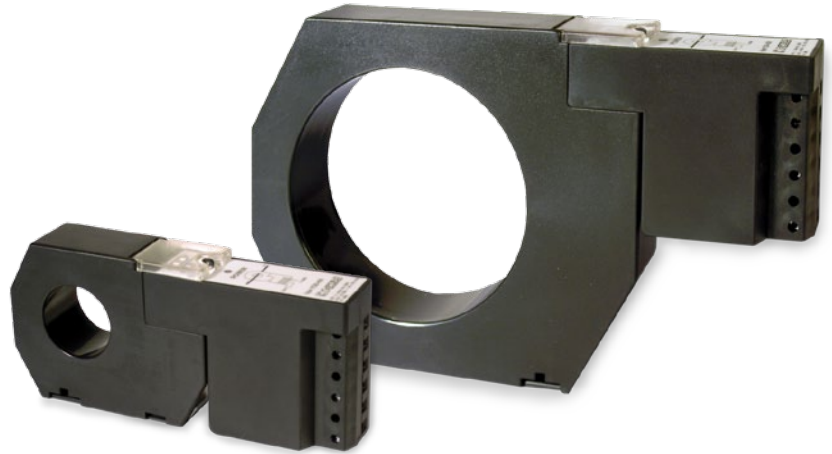


Current transformers with converter

TCB 420

Large-scale current transformer with built-in converter



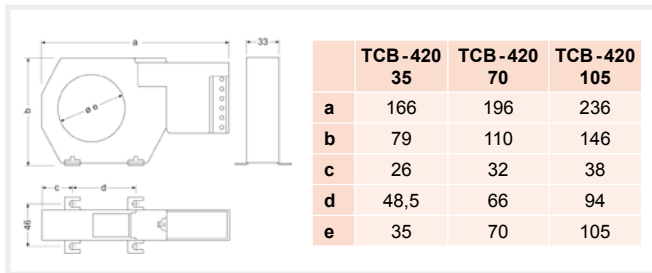
Description

- Built-in internal output power supply
- Needs an auxiliary power supply of 230 V ac
- Primary current: from 2.5 to 1500 A ac, depending on the type
- Secondary current: 4...20 mA
- Internal diameter / Busbar dimensions: from 35 to 105 mm

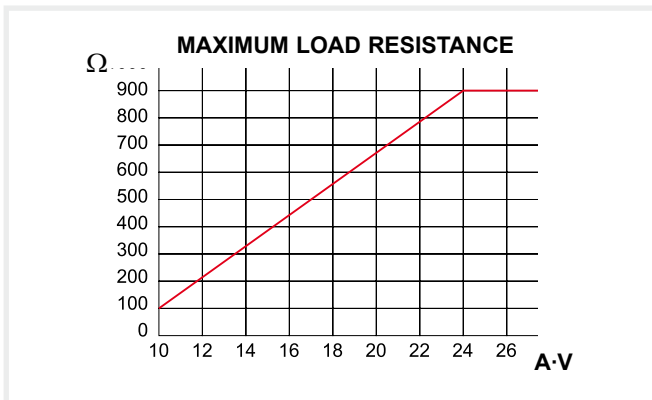
Application

Used in power lines to obtain a current proportional to the primary current rated at 4...20 mA in the secondary

Dimensions



Graph



Features

Frequency	50 / 60 Hz
Highest current in the material	0.72 kV ac
Overloads (at room temperature)	1.5 I _n permanent
Class	
Accuracy class	±1.5% I _n
Operating temperature	-10°...+50 °C
Standards	
IEC 44-1, UNE 21 088-1, IEC 664, VDE0110, VDE0414, UL 94, IEC 1010-1, EN 61010-1	

References

Type	TCB-420 35	TCB-420 70	TCB-420 105	
inner Ø (mm) Busbar	35	70	105	
Dimensions (mm)				
	a	79	110	146
	b	166	196	236
	c	33	33	
A	internal power supply output 4...20 mA (230 V ac auxiliary power supply)			
	Code	Code	Code	
2,5	[*]M71011			
5	[*]M71012			
10	[*]M71013			
20	[*]M71014			
50	[*]M71015			
100	[*]M71016	[1]M71021		
250	[*]M71017	[*]M71022	[1]M71031	
500		[*]M71023	[*]M71032	
750		[*]M71024	[1]M71033	
1 000			[1]M71034	
1 500			[*]M71035	

For higher currents, use: transformer + converter