

Direct single-phase meters

EM30-C / EMS30-C

Electromechanical single-phase energy meters with direct connection for DIN rail mounting



Description

Electromechanical single-phase meters for active energy, with direct connection for DIN rails.

Other features include:

- Mechanical 6 digit display: 5+1 decimal
- Size of 1 module (**EMS30-C**) and 2 modules (**EM30-C**)
- Indication of a connection error
- 1 digital impulse output with optoisolated transistor, for energy consumed

Application

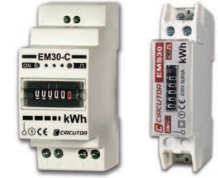
- Control of energy consumption in very small spaces
- In applications with severe temperature conditions. The working life of the unit's mechanical display is not affected by high temperatures.

Features

Voltage circuit	230 Vac (-20...+15%)
Consumption	< 2W
Frequency	50...60 Hz
Current circuit	
Minimum current	20 mA
Nominal current	5 A
Maximum current	30 A
Maximum meter value	99,999.9 kWh
Class/Accuracy	Class 1
Output transistor	Optoisolated (collector open) NPN
Maximum switching voltage	35 V dc
Maximum switching current	50 mA
Impulse duration	250 ms on / 250 ms off
Energy output	100 imp / kWh (no programmable)
Insulation	500 V c.c. ($10^{10} \Omega$)
Ambient conditions	
Operating temperature	-20 ... +50 °C
Altitude	2000 m
Build features	
Minimum display resolution	100 W·h
Type of box	DIN rail
Degree of protection of terminals	IP 20
Dimensions	1 EMS30-C module / 2 EM30-C
Standards	
IEC/EN 62053-31, IEC/EN 62053-21	

Direct single-phase meter
EM30-C / EMS30-C

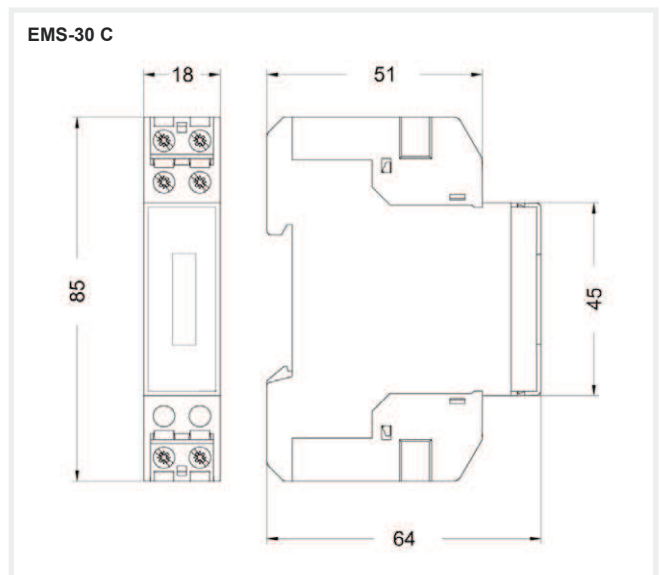
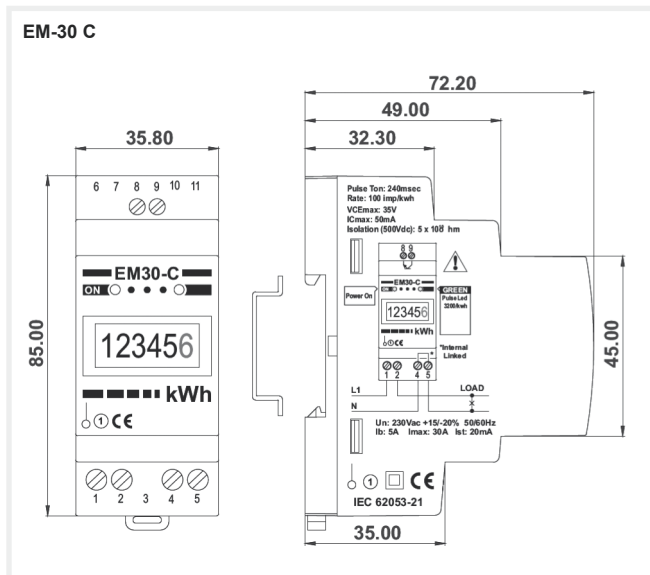
Electromechanical single-phase energy meters with direct connection for DIN rail mounting



References

Parameters measured	Input range	Partial meters	Quadrants	Rates	Digital output	DIN Modules	Type	Code
kW-h	20 mA...30 A	-	2	-	1	2	EM30-C	M30811
kW-h	20 mA...30 A	-	2	-	1	1	EMS30-C	M31611

Dimensions



Connections

