



## GENIUS



- Automatic and manual mains failure controller which stops / starts generator and makes the transfer from genset to mains and viceversa
- High efficiency four digit display
- Suitable for three-phase and single-phase networks
- Display of several parameters (Vf-f, Vf-n, A, Hz, Vbat, Vdt, CH)
- Earth leakage protection (optional)
- 4 programmable output relays
- Control of the status of the genset by means of sensors (fuel, oil, temperature, etc.)
- 5 operating modes: AUTO, NET, GEN, TEST and BLOCK
- Setting via keypad and also from software via built in USB

### PURPOSE OF THE EQUIPMENT

**Genius** is a generator set controller designed to manually or automatically start a generator.

Thanks to its synoptic board and the 4 digit display, the status of the installation can be known at any time and if there is any alarm from parameters, mechanical alarm or electrical alarm.

### FRONT OF THE EQUIPMENT

Display of different parameters on display using a specific button:

- Voltage and frequency of mains and genset
- Current
- Battery voltage
- D+ Terminal voltage
- Hour counter
- Status messages

Alarm displays: External alarm, start up error, battery, fuel, oil pressure, temperature



5 operating modes:

- Automatic
- Mains
- Generator
- Test
- Locked

4 silicon key keypad which allows:

- Manual start/stop of the genset
- Operating mode change
- Alarm control
- Total equipment setting

### NEW BENEFITS OF THE GENIUS

**Genius** is the novelty from **CIRCUTOR** to control the generator sets. It has been designed as a strong, compact, powerful, easily programmable and very complete equipment.

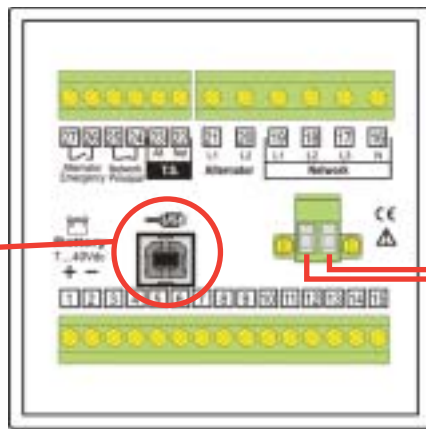
Using its predecessor as a starting point for control and supervision of alarms, the **Genius** goes even further. The **Genius** is equipped with a display which makes its programming and device-user dialogue easy using pop up messages.

In the measurement section, the **Genius** has a three-phase network measurement which makes it more reliable with any possible unbalances. It also has a built in earth leakage protection card (optional) which makes the equipment stand out from its competitors.

In the input / output section all motor faults have been taken into consideration (high temperature, incorrect oil pressure, etc.), and also, the outputs are configurable and their condition may be due to any system event.

Finally, a USB port has been included for the high speed downloading of data directly with a PC without the need for interfaces.

USB  
Communication

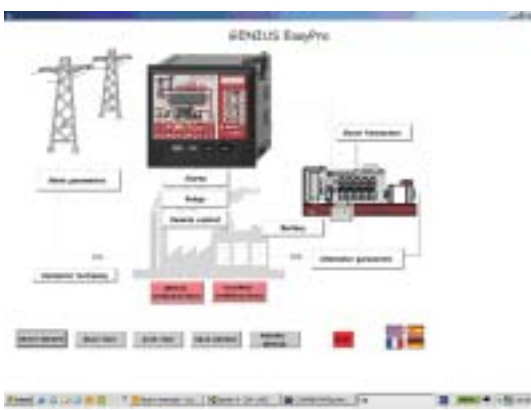


Earth leakage protection



Earth leakage transformer

### GENIUS EASY PRO SOFTWARE



The setting of **Genius** may be done via a USB communication port on the PC, with the **Genius EasyPro** software or by using the display and the front keypad.

The **Genius Easy Pro** software is designed to easily and intuitively set the **Genius** in five stages:

- Mains' parameters
- Start up parameters
- Stop parameters
- Generator parameters
- Digital inputs (for the control of alarms)

These 5 stages can be set from the main screen.

The **software** includes intuitive assistance as a guide to help with the programming of the device.



## FEATURES

<b>Auxiliary power supply</b>	Direct voltage	<b>Display</b>	4 digits
Power supply voltage	7 ... 40 V d.c.	Colour	Red, high efficiency
Frequency margin	35 ... 450 Hz	Cycle of presentation	2 / s
Maximum consumption	10 V·A	Auxiliary LED	30
<b>Measuring circuit</b>		<b>Environmental conditions</b>	
Supervision of the system	Three-phase or single-phase (selectable)	Storage temperature:	- 40 °C / +70 °C
- Voltage measured	60 ... 300 V phase-neutral Error: 1,5 % F.E.	Working temperature	-10 °C / +65 °C
- Frequency measured	20 ... 100 Hz	<b>Assembly features</b>	
Supervision of the alternator	Single-phase	Casing colour	Anthracite grey
- Voltage measured	100 ... 500 V Error: 1,5 % F.E.	Casing material	Self extinguishing ABS
- Frequency measured	20 ... 100 Hz	Protection degree	Front: IP 54 (optional, IP 65)
- Current measured	Single-phase 0 ... 5 A Error: 1,5 % F.E. (via T.I.)	Weight	0,35 kg
<b>Accuracy</b>		<b>Standards</b>	IEC 1010, IEC 348, IEC 664, IEC 801, EN 50081-1, EN 50082-2
Voltage	Cl 1 +/- 2 dig.		
Frequency	+/- 0,01 Hz		
Phase angle	+/- 0,5°		

## CODES

Code	Type	Description
MA0311	GENIUS	Generator controller
MA0321	GENIUS	Generator controller with earth leakage protection

TYPICAL APPLICATION OF THE GENIUS

